



Test & Measurement Services

**THP Services, division of THP Systems Ltd, provides test & measurement services. Our UK based test house is focused on providing testing solutions, throughout a wide range of capabilities. Testing product compliance to international standards.**



**Vib1 – 16kN IMV EM2301 “ECO”**

Sine Force: 16,000N  
 Random Force: 16,000N  
 Shock Force: 32,000N  
 Armature Size: 200mm  
 Frequency Range: DC-3,000Hz  
 Displacement: 50.8mm Peak to Peak (2”)  
 Velocity: 2.2m/s (78in/s)  
 Max Acceleration – Sine: 125g pk (1250m/s<sup>2</sup>)  
 Max Acceleration – Random: 87.5grms (875m/s<sup>2</sup>)  
 Max Acceleration – Shock: 250g pk (2500m/s<sup>2</sup>)  
 Max Payload: 300kg

**Vib2 – 22kN LDS V850-440T**

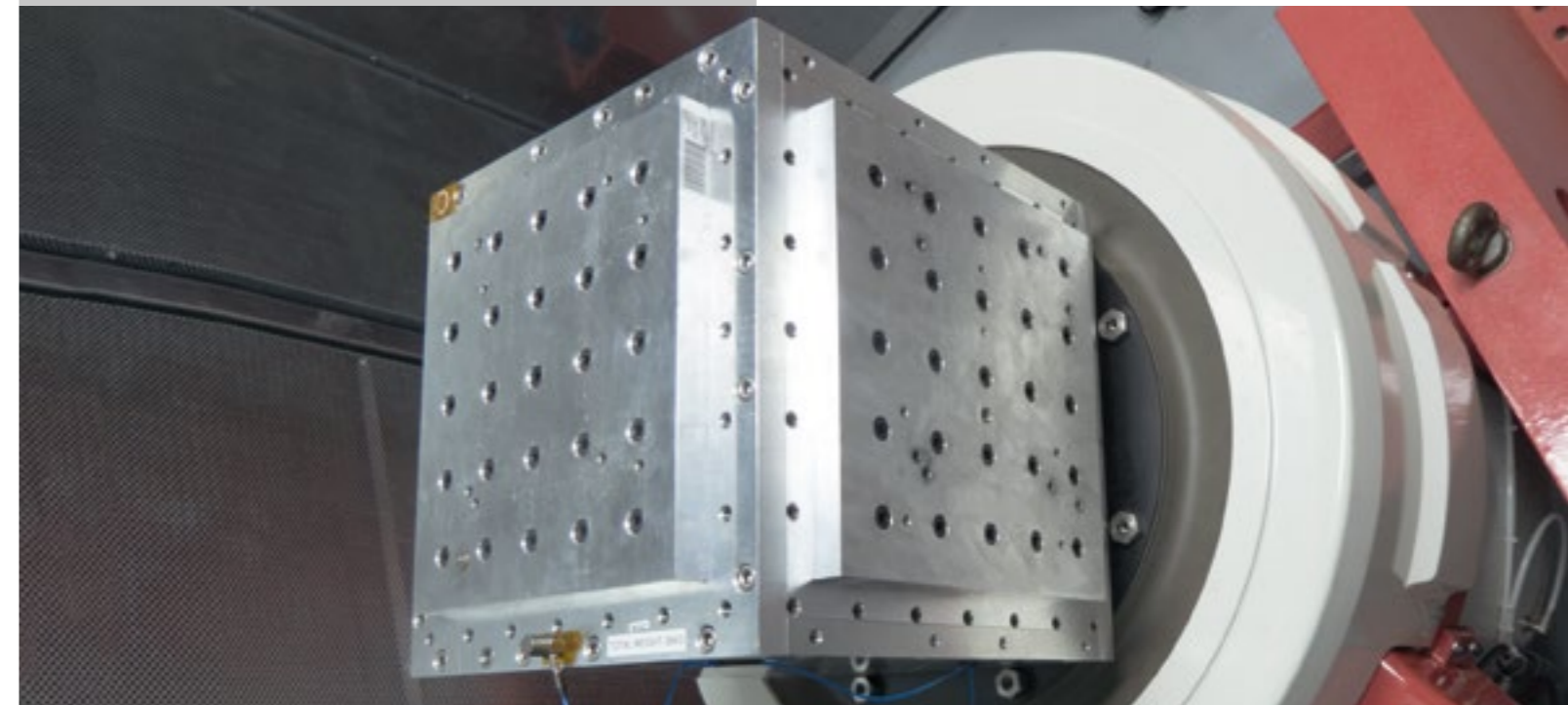
Sine Force: 22,000N  
 Random Force: 22,000N  
 Shock Force: 44,000N  
 Armature Size: 440mm  
 Frequency Range: DC-3,000Hz  
 Displacement: 50.8mm Peak to Peak (2”)  
 Velocity: 2.0m/s (78in/s)  
 Max Acceleration – Sine: 60g pk (736m/s<sup>2</sup>)  
 Max Acceleration – Random: 50grms (588m/s<sup>2</sup>)  
 Max Payload: 350kg

**Vib3 – 8.9kN LDS V730-335T**

Sine Force: 8,894N  
 Random Force: 8,894N  
 Shock Force: 17,788N  
 Armature Size: 335mm  
 Frequency Range: DC-3,000Hz  
 Displacement: 50.8mm Peak to Peak (2”)  
 Velocity: 2.0m/s (78in/s)  
 Max Acceleration – Sine: 75g pk (736m/s<sup>2</sup>)  
 Max Acceleration – Random: 60grms (588m/s<sup>2</sup>)  
 Max Payload: 160kg

**Vib4 – 6.6kN LDS V726 / 600mm Sliptable**

Sine Force: 6,583N  
 Random Force: 3,514N  
 Shock Force: 13,166N  
 Armature Size: 185mm  
 Frequency Range: DC-4,500Hz  
 Displacement: 25.4mm Peak to Peak (1”)  
 Velocity: 1.78m/s (70.07in/s)  
 Max Acceleration – Sine: 93.7g pk (918.8m/s<sup>2</sup>)  
 Max Acceleration – Random: 50grms (490.3m/s<sup>2</sup>)  
 Max Payload: 227kg



**Vib5 – 0.67kN LDS V550**

Sine Force: 667N  
 Random Force: 556N  
 Armature Size: 110mm  
 Frequency Range: DC-6,300Hz  
 Displacement: 25.4mm Peak to Peak (1”)  
 Velocity: 1.06m/s (42in/s)  
 Max Acceleration – Sine: 68.5g pk (672m/s<sup>2</sup>)  
 Max Acceleration – Random: 57.3grms (562m/s<sup>2</sup>)  
 Max Payload: 25kg

**Our test engineers are able to offer expert advice & support, to suit individual testing requirements.**



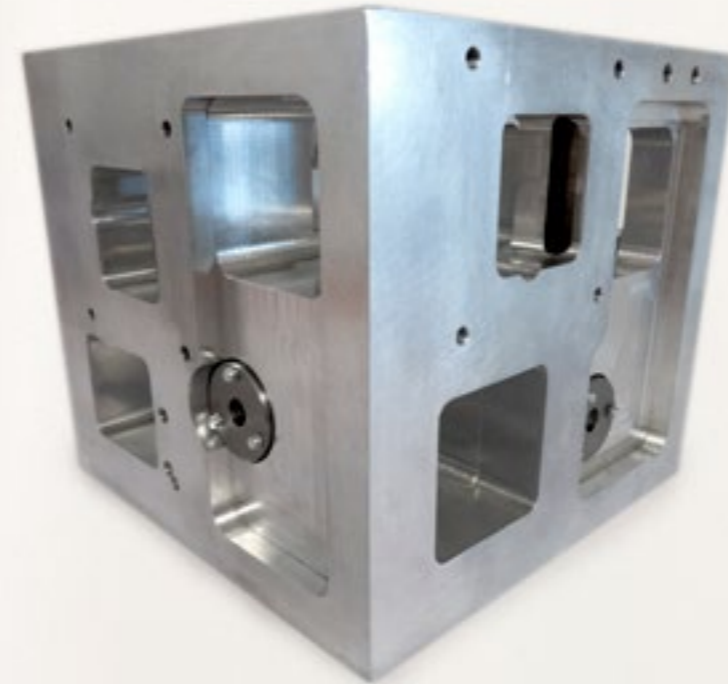


**Clim1 – 453L Temperature Chamber**

Manufacturer: CSZ  
 Model: ZPS-16-2-2-H/WC  
 Size: 453 liters (16 cu.ft)  
 Internal Dimensions: 760mm x 760mm x 760mm  
 Temperature Range: -70° to 190°C  
 Temperature Rate Change: 5°C/min Heat & Cool (based on IEC60068-3-5), no load.  
 Temperature Control: +/-0.5°C at steady state condition after stabilization.

**Clim2 – 420L Temperature Chamber (Usable with Shaker)**

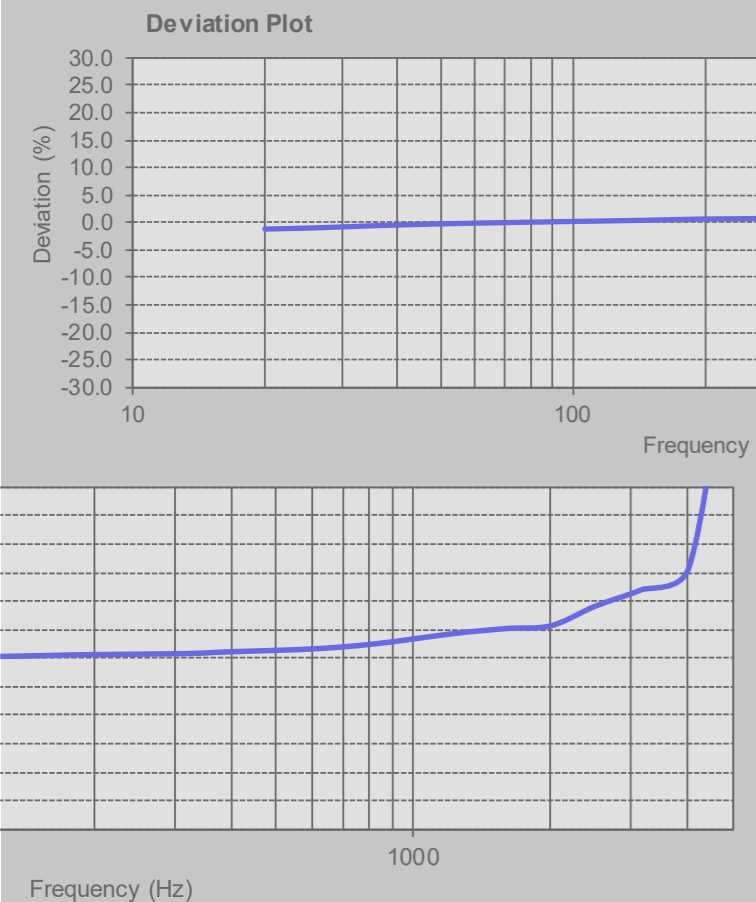
Manufacturer: Weiss  
 Model: FS420-40V  
 Size: 420 liters (15 cu.ft)  
 Internal Dimensions: 750mm x 750mm x 750mm  
 Temperature Range: -40° to 180°C  
 Temperature Rate Change: 3°C/min Heat & Cool (based on IEC60068-3-5, with passive 20kg load)  
 Temperature Control: +/-0.5°C at steady state condition after stabilization.



All our fixtures are designed and customized to suit customers' requirements for any payload.

Professional engineers will design, develop and create custom fixtures, to represent realistic scenarios.

All customized fixtures are designed to be lightweight, while maintaining a high-degree of durability and stiffness. If required our fixtures can be rotated and mounted along three axis, giving flexibility and efficiency due to reduced setup as the same fixture can be used for different tests.



THP Services want customers to achieve the highest level of accuracy and reliability in testing. We can provide calibration of accelerometers from our UK based test house to ISO and UKAS traceable standards. However, if needed we can arrange the service on-site for calibration of accelerometers and controllers to ISO traceable standards.

THP Services can also carry out calibration for vibration controllers, environmental chambers, dynamic signal analysers, data acquisition systems, modal hammers and many other makes and models of sensors.

**Contact**

To book a test or for further information on testing capabilities contact:

Tel: 01462 481859  
 Email: [services@thp-systems.com](mailto:services@thp-systems.com)  
[www.thp-systems.com/thp-services](http://www.thp-systems.com/thp-services)

THP Services  
 Unit 32  
 Devonshire Business Centre  
 Works Road, Letchworth  
 SG6 1GJ

**Humidity, sand & dust, salt spray, drop & shock testing capabilities are also available on request.**