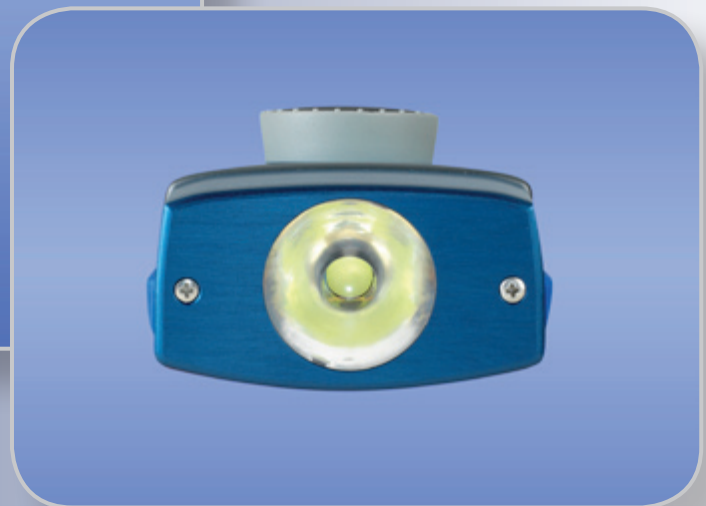


DRELLOSCOP 1020



Drelloscopie®



- ***State of the art LED technology with an optimized knowledge based LED control technology for high-performance LED***
- ***Maximum brightness with concurrent short flash duration***
- ***Optimum illumination by using a special LED optics***
- ***Large and easy to read display***
- ***Fast Finder function for manual control***
- ***Smooth image shifting and slow motion function for external control***

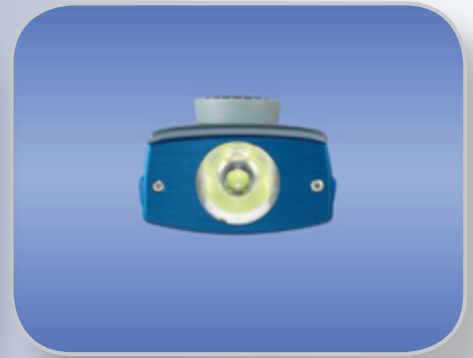
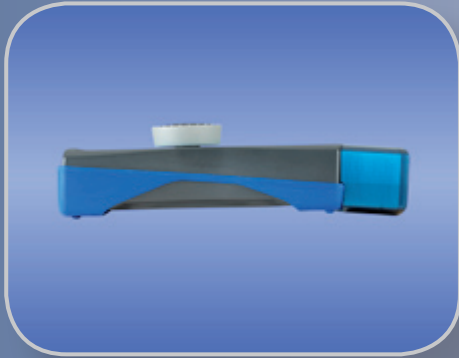
Measure, monitor and analyse motion

with stroboscopes from

DRELO

www.drello.de

DRELLOSCOP 1020



Stroboscope

Probably the brightest LED stroboscope of this device class, it is ideally suited for portable use in harsh industrial environments.

The battery powered DRELLOSCOP 1020 also offers a connection to power supply, thus providing customized applications.

The akin to daylight spectrum guarantees a high colour fidelity in the representation.

Operator panel

All control and display elements are protected from dust by an abrasion proof industrial keypad.

Control is either manually or externally by machine or encoder signals.

The large display is easy to read even in poorly lit environments.

Intuitive user friendly operation.

Optics

An exceptionally good illumination is achieved by the interplay of the specially designed optics combined with the integrated high performance light-emitting diodes.

Technical data

Model DRELLOSCOP 1020

Control

| | |
|---------------------------|---|
| Manual control (internal) | manual by rotary adjuster, 120 ...25000 min ⁻¹ resp. 2...416,6 sec ⁻¹ Fastfinder function, by multiplying or dividing the adjusted flash frequency |
| External control | external by rectangular pulses 10 ... 24 V smooth real time image shifting 0 ...360° and slow motion function |
| Control of flash duration | automatic, depending on the flash frequency or manually by rotary adjuster, setting range 1...250 µs |
| Measured value display | 5-digit 7-segment display, 7.6 mm digit height |

Electrical

| | |
|-----------------------------|--|
| Power supply | 3 x 1,2 V NiMH rechargeable batteries (AA), fast-charging mains unit 5 V (DC) |
| Power consumption | 400 mA @ 5 V (DC) |
| Reverse voltage protection | YES |
| Operating time (battery) | approx. 4 hours at full load (depending on type of battery) |
| Operating time (mains unit) | continuous operation |

Ambient conditions

| | |
|--------------------------------|---------------|
| Admissible ambient temperature | 0 ... 45 °C |
| Admissible storage temperature | -20 ...+60 °C |
| Type of protection | IP 50 |

Dimensions / weight

| | |
|------------------------|--|
| Dimensions (L x W x H) | 200 mm x 85 mm x 40 mm (with control knob 55 mm) |
| Weight | approx. 0.5 kg |

Illumination

| | |
|-----------------------|--|
| Level of illumination | 3500 lx @ 200 mm object distance, measured at 50 Hz @ 50 µs flash duration |
| LED | High-performance light-emitting diode, white radiant combined with highly efficient optics |
| Colour temperature | 6500 K |
| Illumination Ø | 150 mm @ 300 mm object distance |

Measure, monitor and analyse motion

with stroboscopes from

DRELO

www.drello.de