



TrueDrop™

a MAXDROP™ Series Product

OUR EQUIPMENT. YOUR SUCCESS.

DROP TEST SYSTEM

Precision drop testing at an affordable price. The TrueDrop™ 160 drop tester. This drop tester represents the ultimate in product and package performance testing and is designed to meet a wide variety of global testing needs.

TEST WITH CONFIDENCE

One of three models in the MAXDROP™ Series. It helps determine the ruggedness of packages and the effectiveness of their interior cushioning when exposed to impact during material handling. The effects of dropping are easily duplicated in a laboratory setting using controlled and precise flat, corner, and edge drop tests.

Complies with ISTA, ASTM, ISO, MIL STD, and other internationally recognized test standards.

Features

Linear rail movement with Single Drop Arm Action

- 160 lbs (73 kg) maximum payload capacity
- 32" (813 mm) maximum package depth
- 36" W x 32" D (914x 813mm) steel impact surface
- 12" - 72" (300 - 1829 mm) adjustable drop height
- Audible alert during drop arm release sequence
- Package Holding Fixture holds package in correct orientation prior to drop
- Exclusive Hand-Held Operator Control with LCD digital readout:
 - Selectable display units of inches or millimeters
 - Two button drop release sequence to ensure safe operation
 - Auto positioning function with memory
 - Drop positioning control
- Analog counter tracks the number of drops performed
- Versatile package height and width
- CE compliant

DROP with CONFIDENCE



Payload Capacity	160 lb (73 kg)
Drop Height	12-72 in (305-1829 mm)
Maximum Package Depth	32 in (813 mm)
Impact Zone	36x32 in (914x813 mm) - WxD
Utility Requirement (Electrical)	220V / 1Ph / 50-60Hz / 7Amp
Utility Requirement (Air)	90 PSI (620 kPa) / 2 cfm (60 lpm)
Machine Weight	1300 lb (590 kg)
Machine Dimensions	103x36x69 in (2616x914x1753 mm) - HxWxD

Due to our continuous commitment to product development, the above specifications and features may be modified without notice.

L.A.B. Equipment, Inc., 1549 Ardmore Avenue, Itasca, IL 60143, USA
Phone: 630-595-4288 Fax: 630-595-5196 www.labequipment.com

DROP TESTING



OUR EQUIPMENT. YOUR SUCCESS.

A Spectral Dynamics Company

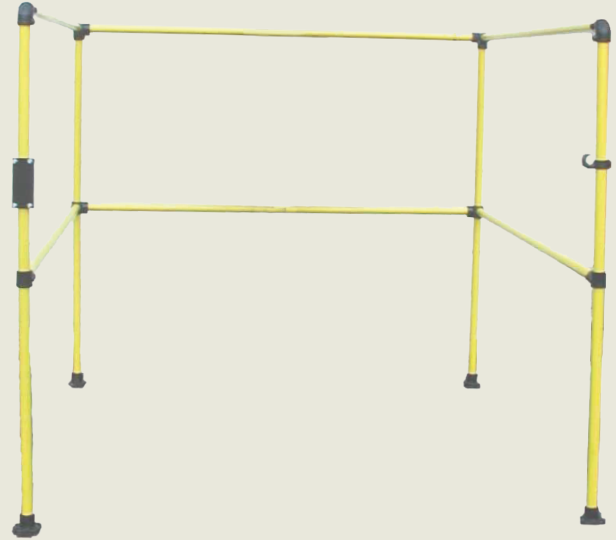


TrueDrop™ Model 160 OPTIONS

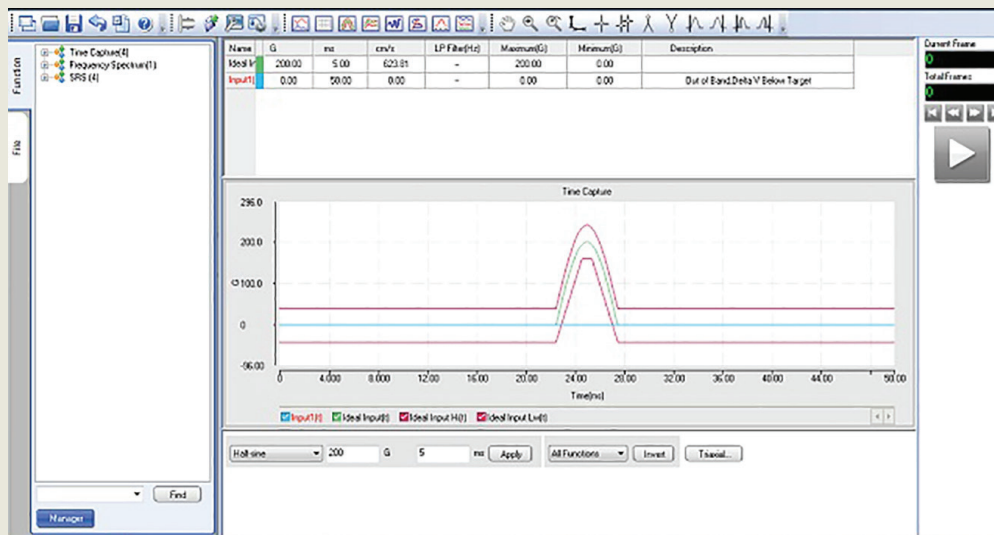
- Extended drop height
- Enlarged base plate for larger packages
- Wooden base plate for MIL STD 810 testing
- Safety Fence



Package Holding Fixture



Safety Fence



DAS-105 Data Acquisition System:
Drop & Shock



OUR EQUIPMENT. YOUR SUCCESS.

A Spectral Dynamics Company



L.A.B. Equipment, Inc., 1549 Ardmore Avenue, Itasca, IL 60143, USA

Phone: 630-595-4288 Fax: 630-595-5196 www.labequipment.com